



CUBE NATIONAL MEET 2022



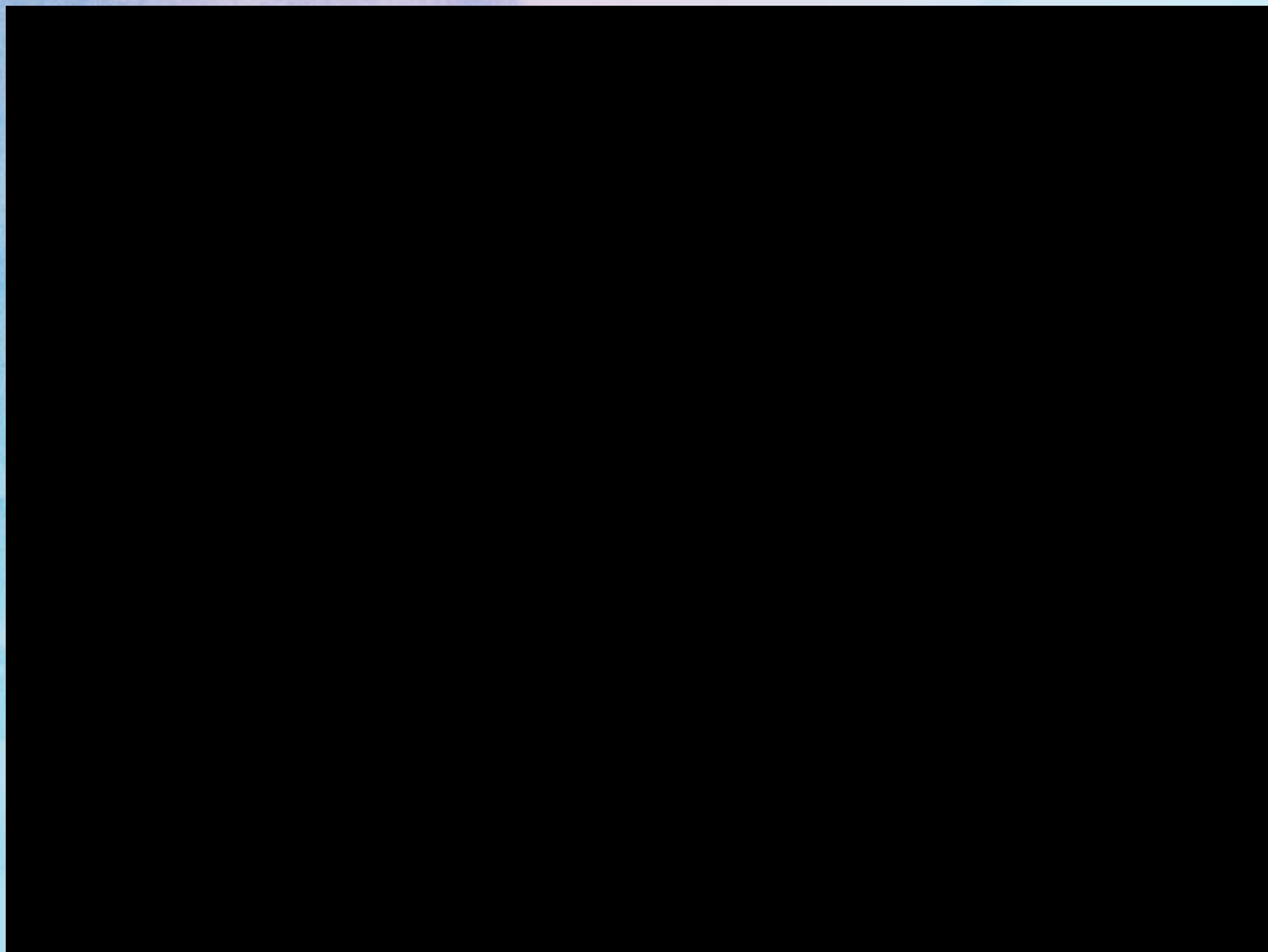
Ants



INTRODUCTION

- They are called as Social insects.
 - Ants can be found on every land body, except the polar regions.
 - Size ~ 2 to 25 mm.
-
- Kingdom : Animalia
 - Phylum : Arthropoda
 - Class : Insecta
 - Order : Hymenoptera
 - Family : Formicidae





OBJECTIVES

Long term objective :-

- How did ant follow a certain path, what is the reason behind it?

Short term objectives :-

- To stabilize the ant culture
- To study the morphology of the ant
- To find types of Ants.

IDENTIFICATION

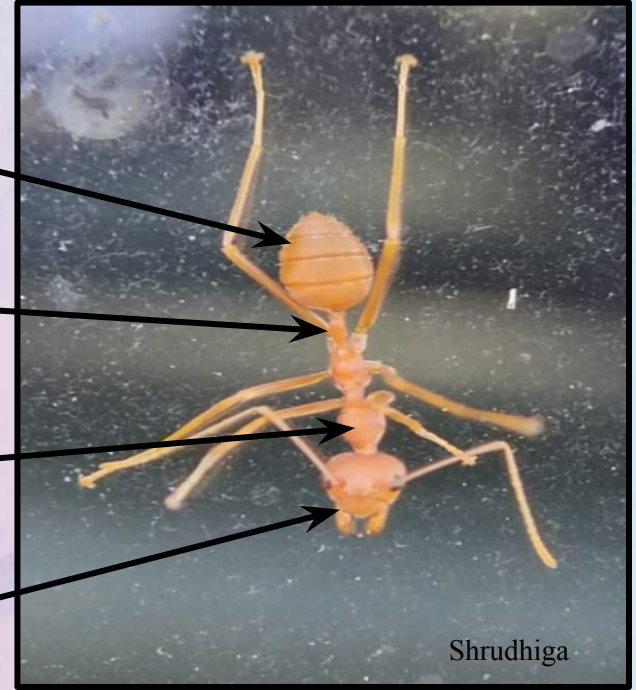


Abdomen

Petiole

Thorax

Head



Habitat Of Ants

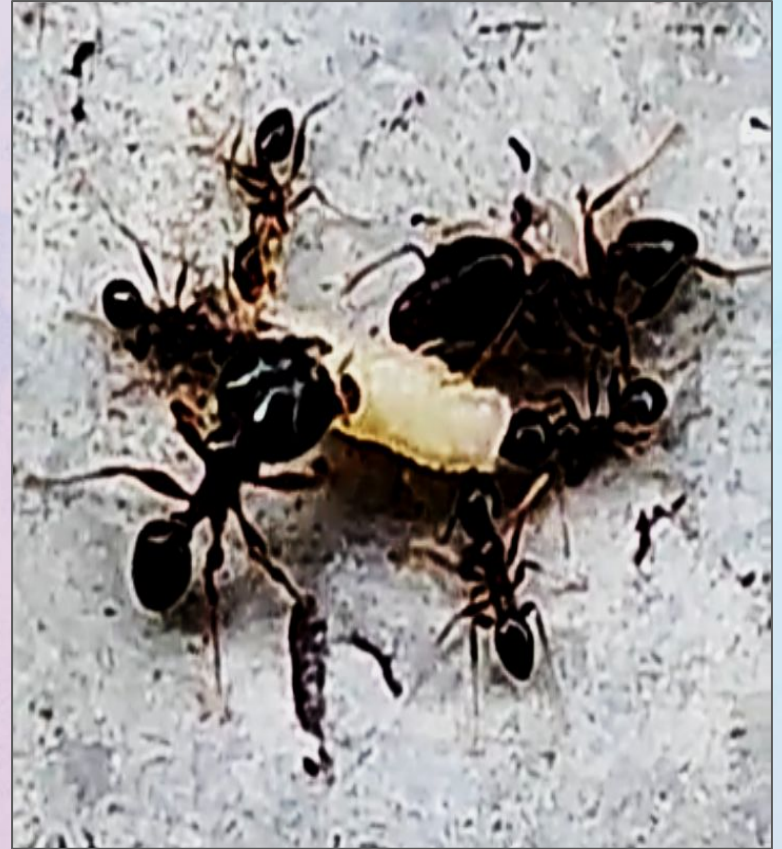




Weaver Ant building nest on mango tree

Weaver Ant

Picture credit - Aswathy Suresh



Ants carrying Fruitfly larvae

Picture credit - M C Arunan



Ants with their pupae



A colony ants communicating with each other

DIVERSITY OF ANTS



Black Crazy Ants

Picture credit - Seethalakshmi



Weaver Ants

Picture credit - Aswathy Suresh



Carpenter Ants

Picture credit - Shrudhiga

ANT COLONY



Worker

Pic credit - Shrudhiga



Queen

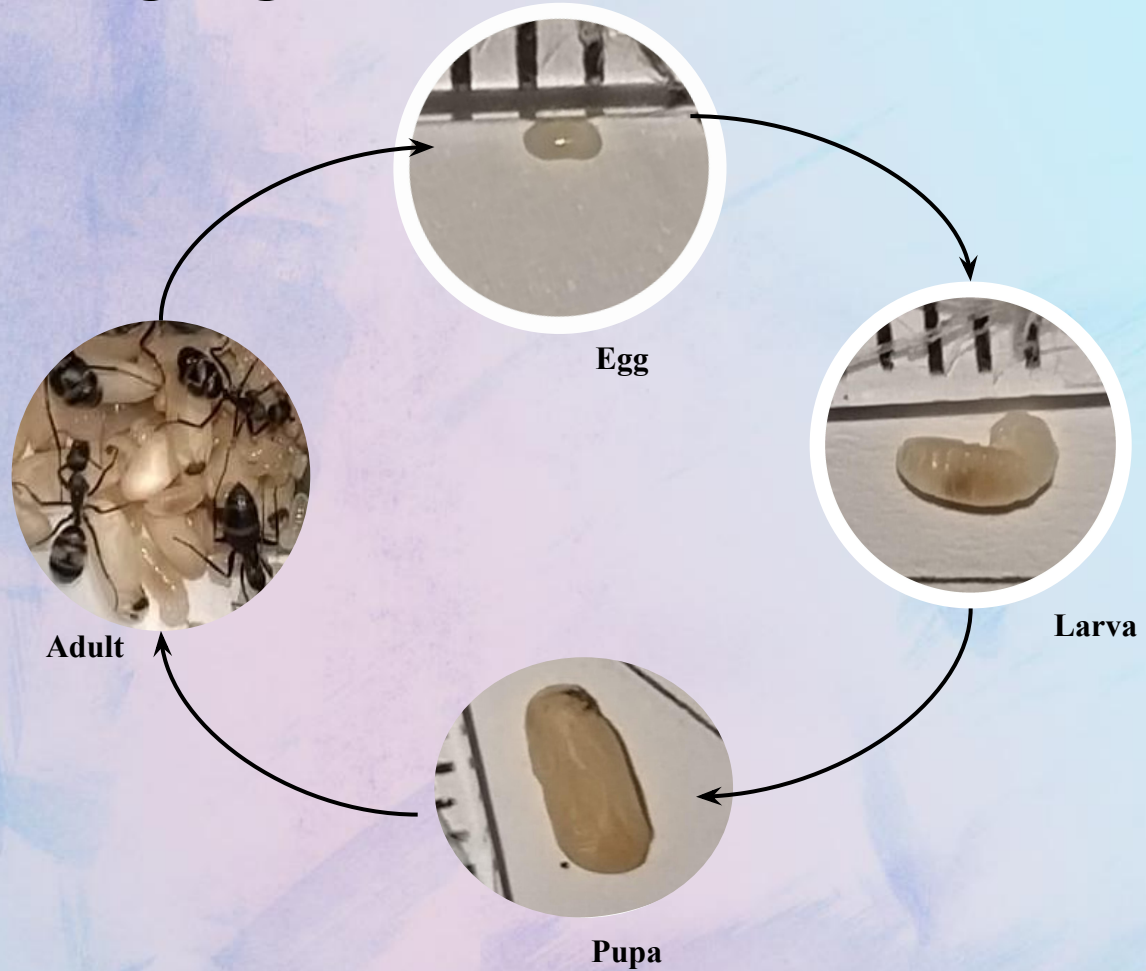
Pic credit - Seethalakshmi



Male

(From web)

LIFE CYCLE



**Do Ants help in
pollination???? 🤔**



Photo by Amnakrishna - Kerala

Phyllanthus - pollination



Mutualism- Ant Mealy bugs Interaction



Janhvi Deshmukh

 Interesting observation 



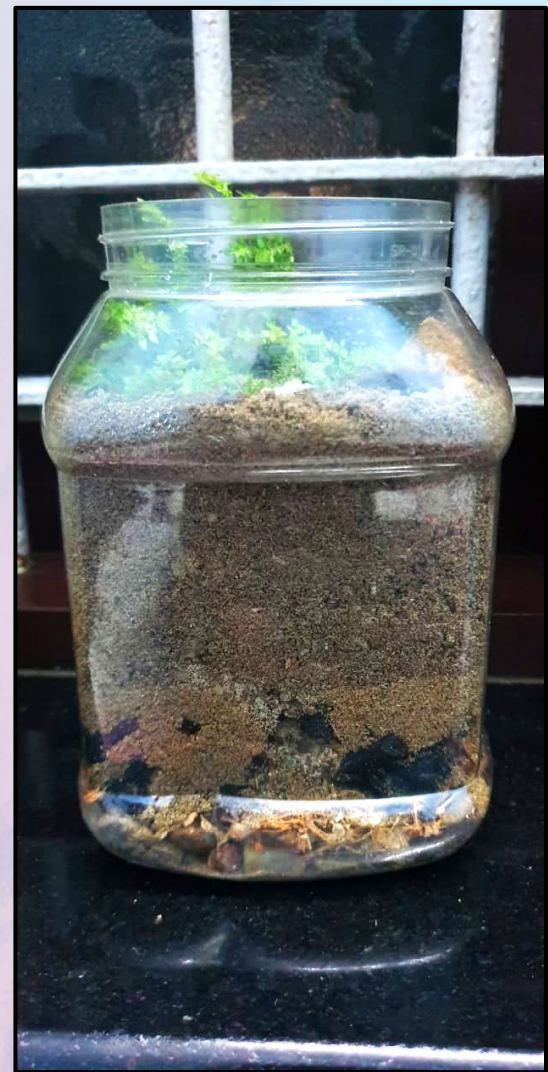
InShot



A visit to Home Labs

CUBE HOMELAB

Vishnupriya - Aalappad, Kerala



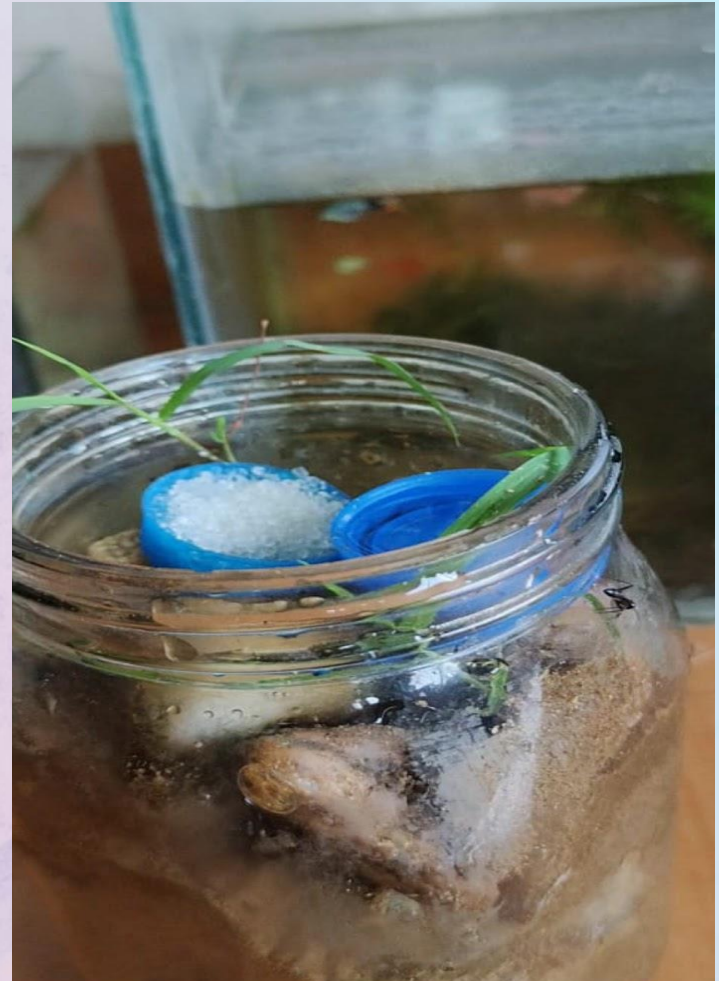


CUBE HOMELAB

Seethalakshmi - Pazhuvil - Kerala

CUBE HOMELAB

Shrudhiga - Thathamangalam- Kerala

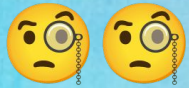




CUBE HOMELAB

Maswood mulla -Chimbel- Goa

**Why do ants carry dead
ants from their colony?**





**How can we Culture Ants at Our
Homelabs?????**

RESEARCH METHODOLOGY

How can one prepare formicarium at HOME? 🤔

- Jar(plastic /Glass)
- Soil
- Stones
- Sugar
- Water



TEST TUBE CULTURE

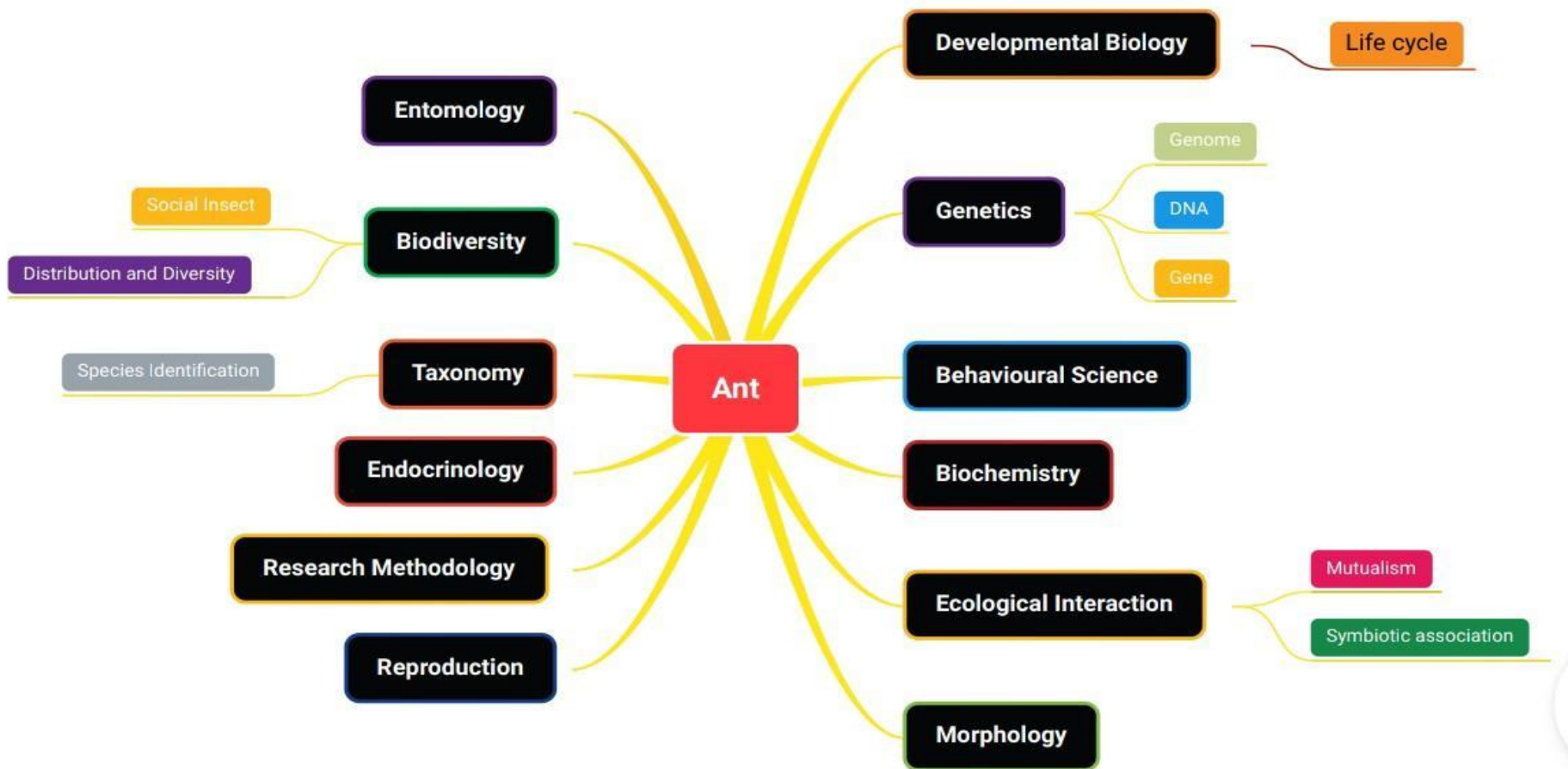
- Test tube
- Cotton
- Water
- Cocopeat (coconut husk)



Goof ups

- When we introduced a new setup for culture (Homemade formicarium) that was an open setup, so ants can easily escape and the probability for attacking ants is high.
- We need to focus on particular ant for the study.

Concept Map



ANT MODEL SYSTEM COLLABORATORS

KERALA

- Seethalakshmi. C.R. - Pazhuvil
- Shrudhiga - Thathamangalam
- Vishnu priya. C. J.- Alappad
- Lakshmi. P. J. - Kandassankadavu
- Shaharuban - Edathirinji
- Aswathy Suresh - Bottukadavu
- Theertha M. D. - Kozhikode

GOA

- Maswood Mulla
- Meghraj Kammath

JHARKHAND

- Man Masih Beck- Ranchi
- Rechel Tirkey - Ranchi

WEST BENGAL

- Batul Pipewala - Kolkata

MAHARASHTRA

- Janvi Deshmukh - Wardha
- Anshu Kadam - Mumbai



Thankyou